



THANK YOU FOR PURCHASING KOSO DB-02 SPEEDOMETER, BEFORE OPERATING THE UNIT, PLEASE READ THE INSTRUCTION THOROUGHLY AND RETAIN IT FOR THE FUTURE REFERENCE.

### ⚠ Notice

- The meter function is powered by the inner battery, but the back light is powered by the outside power input
- For installation, please follow the steps described in manual. Any damage caused by wrong installation shall be imputed to the users.
- Don't break or modify the wire terminal. To avoid the short circuit, please don't pull the wire when installing.
- Do not disassemble or change any parts excluding the manual description.
- The interior examination or maintenance should be executed by our professionals.

MARK MEANING:

**NOTE** You could get the installation details from the information behind the mark.

⚠ Some processes must be followed to avoid the affection caused by wrong installation.

⚠ **WARNING!** Some processes must be followed to avoid damages to yourself or the public.

⚠ **CAUTION!** Some processes must be followed to avoid the damage to the vehicle.



PRESS THE  
BUTTON ONE TIME



PRESS THE  
BUTTON 3  
SECONDS

## 1-1 Accessory

<b>1</b> LCD meter X 1 	<b>2</b> Power wire X 1 	<b>3</b> RPM WIRE SET (A TYPE) X 1 	<b>4</b> RPM WIRE SET (C TYPE) X 1 
<b>5</b> Temp sensor wire set X 2 	<b>6</b> PT 1/8 water temp sensor X 2 	<b>7</b> Reed switch speed sensor X 1 	<b>8</b> D6 X 5L mm magnet X 1 
<b>9</b> Mid-way connect X 2 	<b>10</b> M8/ S type speed sensor bracket X 1 	<b>11</b> M10/ S type speed sensor bracket X 1 	<b>12</b> M5X5L Hexagon socket screw X 2 
<b>13</b> Battery X 1 	<b>14</b> 2.5 mm spanner X 1 	<b>15</b> 4 mm spanner X 1 	<b>16</b> Meter bracket X 1 
<b>17</b> M5 washer X 2 	<b>18</b> M5 X 15L screw X 2 		

**NOTE** Please contact the local distributor if the items you open are not the same, with the above-listed one.

## 1-2 Option accessory

<b>1</b> Disc magnet screw <p>5/16-18 X 22.1L M5 X P0.8 X 12L M6 X P1.0 X 12.6L M6 X P1.0 X 19.7L M6 X P1.0 X 24L M8 X P1.25 X 22.5L M8 X P1.25 X 27.5L M8 X P1.25 X 29L M10 X P1.25 X 28.3L</p>	<b>2</b> Oil temp sensor adapter <p>M12 X P1.5 X 15L M14 X P1.25 X 15L M14 X P1.5 X 15L M16 X P1.5 X 15L M18 X P1.5 X 15L M20 X P1.0 X 15L M20 X P1.5 X 15L</p>	<b>3</b> Water temp sensor adapter <p>M14 M16, M18 M22, M26 mm</p>	<b>4</b> Temp sensor <p>M10 X P1.0 M12 X P1.5 M14 X P1.25 M14 X P1.5 M16 X P1.5 / M18 X P1.5</p>
<b>5</b> L TYPE speed sensor bracket 	<b>6</b> Temp sensor wire set (2 M) 		

**NOTE** Some of the option accessories may not sell. For the details, please contact the local distributor.



THANK YOU FOR PURCHASING KOSO DB-02 SPEEDOMETER, BEFORE OPERATING THE UNIT, PLEASE READ THE INSTRUCTION THOROUGHLY AND RETAIN IT FOR THE FUTURE REFERENCE.

### Notice

- The meter function is powered by the inner battery, but the back light is powered by the outside power input.
- For installation, please follow the steps described in manual. Any damage caused by wrong installation shall be imputed to the users.
- Don't break or modify the wire terminal. To avoid the short circuit, please don't pull the wire when installing.
- Do not disassemble or change any parts excluding the manual description.
- The interior examination or maintenance should be executed by our professionals.

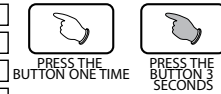
### MARK MEANING:

**NOTE** You could get the installation details from the information behind the mark.

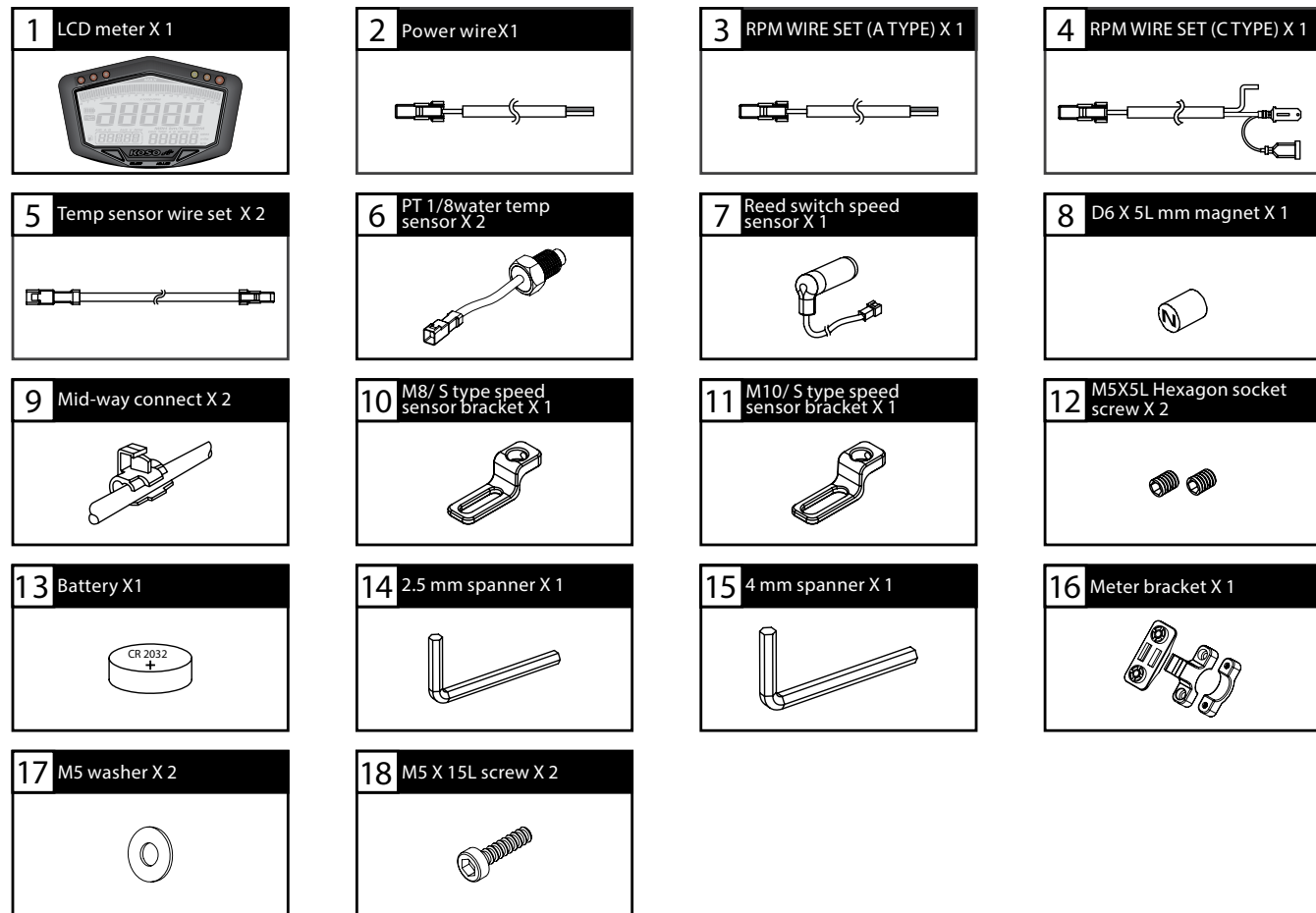
**Some processes must be followed to avoid the affection caused by wrong installation.**

**WARNING!** Some processes must be followed to avoid damages to yourself or the public.

**CAUTION!** Some processes must be followed to avoid the damage to the vehicle.

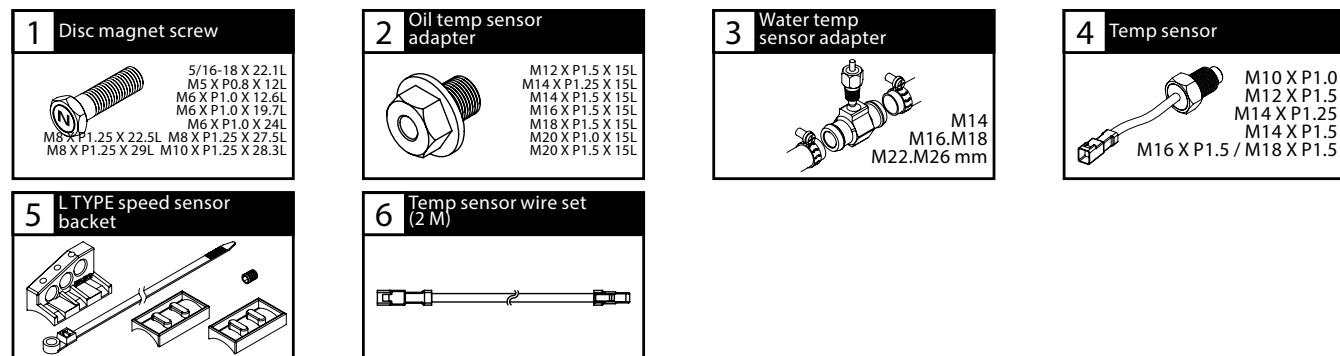


### 1-1 Accessory



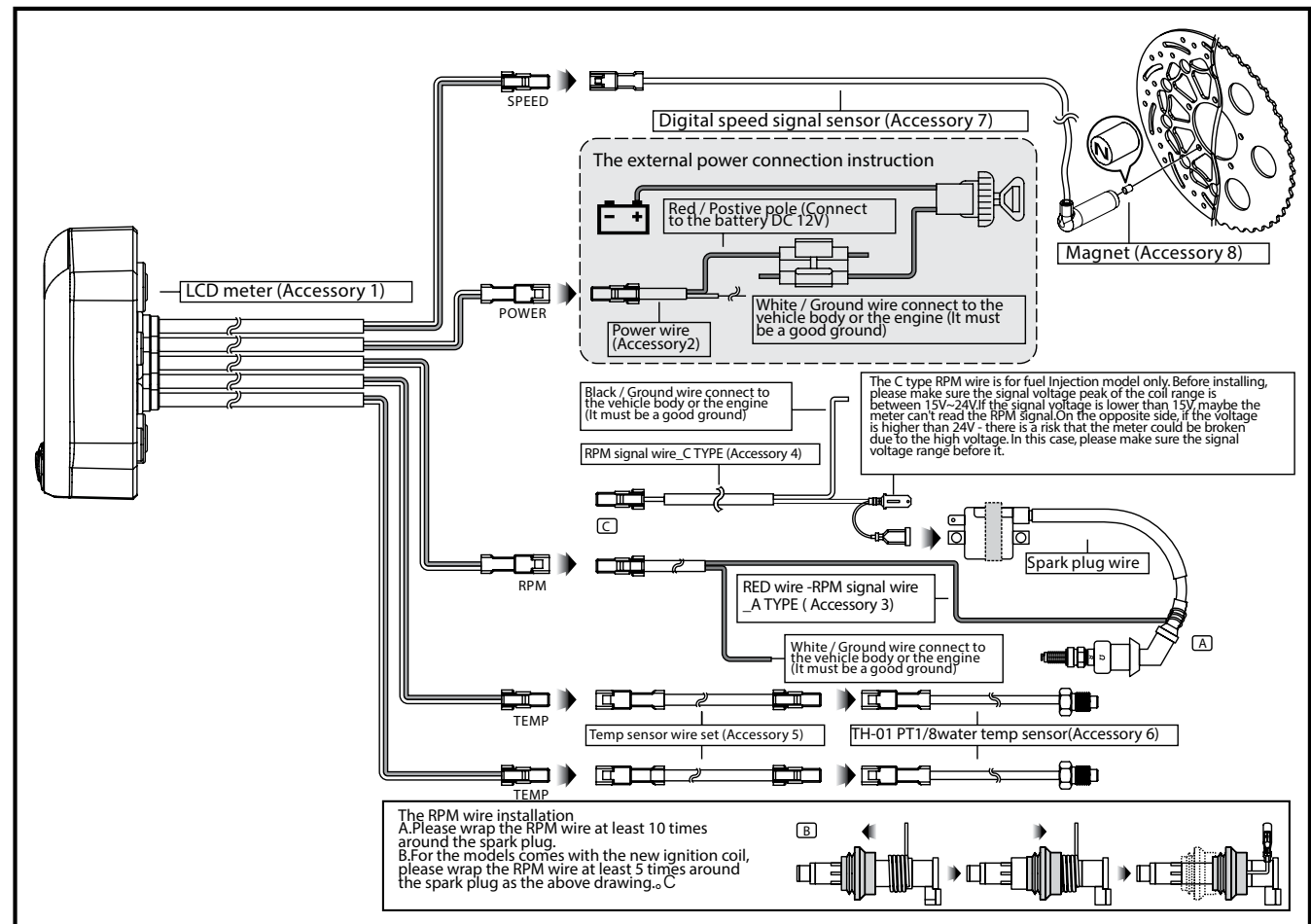
**NOTE** Please contact the local distributor if the items you open are not the same, with the above-listed one.

### 1-2 Option accessory

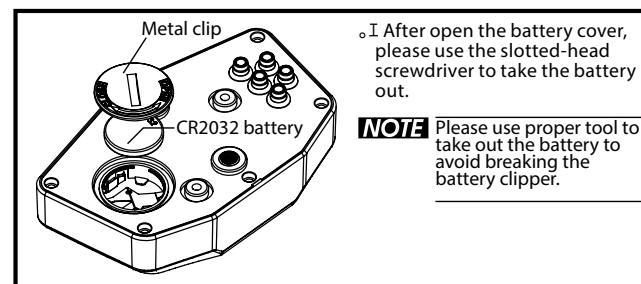


**NOTE** Some of the option accessories may not sell. For the details, please contact the local distributor.

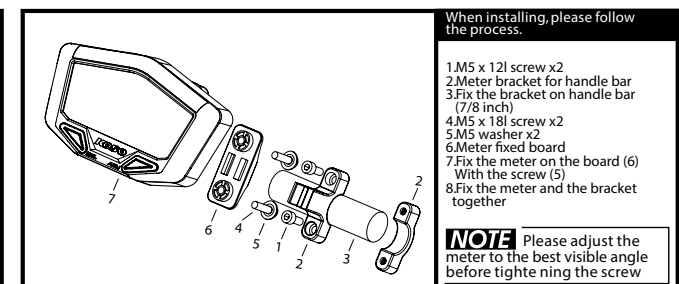
### 2-1 Wiring installation instructions



### 2-2 Battery change



### 2-3 INSTALLATION INSTRUCTIONS.



### 3 Display instruction

**The temperature alarm A/B**

- I Setting range: G60~250°C (140~482°F)
- I Setting unit: G1°C (°C/°F)

**Speeding warning light**

- I Setting range: G30~360 km/h (19~225 MPH)
- I Setting unit: G1 km/h (MPH), C

**Batter situation**

- I When the battery is full, it will show the battery in 4 segments.
- I When the external power is connect, the battery symbol will disappear.

**Auto sleep function**

- I When the meter works with the inner battery, it will enter the auto sleep function when the meter idles over 20 seconds

**The tachometer bar range**

- I Display range: G10,000, B15,000
- B20,000 RPM, C

**3 stages RPM shift light**

- I Setting range: G5,000~20,000 RPM
- I Setting unit: G100 RPM, C

**The digital tachometer**

- I Display range: G0~360 km/h (0~225 MPH)
- I Display unit: G1 km/h (MPH), C

**Bar graph tachometer**

- I Display range: G0~20,000 RPM
- I Display unit: G10 RPM, C

**Odometer**

- I Display range: 0~99999 km (mile), reset automatically after 99999 km (mile)
- I Display unit: 0.1 km (mile)

**Trip A, B**

- I Display range: 0~999.9 km (mile), reset automatically after 0~999.9 km (mile)
- I Display unit: 0.1 km (mile)

**The temperature alarm A/B**

- I Setting range: G60~250°C (140~482°F)
- I Setting unit: G1°C (°C/°F)

**CLOCK**

- I Time: G24H
- I When the meter is off, it will show the seconds.

**Volt meter.** ] the external power. ^

- I Display range: G0.0~18.0V
- I Display unit: G0.1V
- I When the external power is connected, it will show the voltage value directly. It will show 0.0V when the external power is disconnected.