



Thank you for purchasing **KOSO G2 REV.COUNTER**. before operating the unit, please read the instruction thoroughly and retain it for the future reference.

Notice

- 1.The meter function is powered by the inner battery, but the back light is powered by the outside power input
- 2.For installation, please follow the steps described in manual. Any damage caused by wrong installation shall be imputed to the users.
- 3.To avoid the short circuit, please don't pull the wire when installing. Don't break or modify the wire terminal.
- 4.Do not disassemble or change any parts excluding the manual description.
- 5.The interior examination or maintenance should be executed by our professionals.

MARK MEANING:

NOTE You could get the installation details from the information behind the mark.

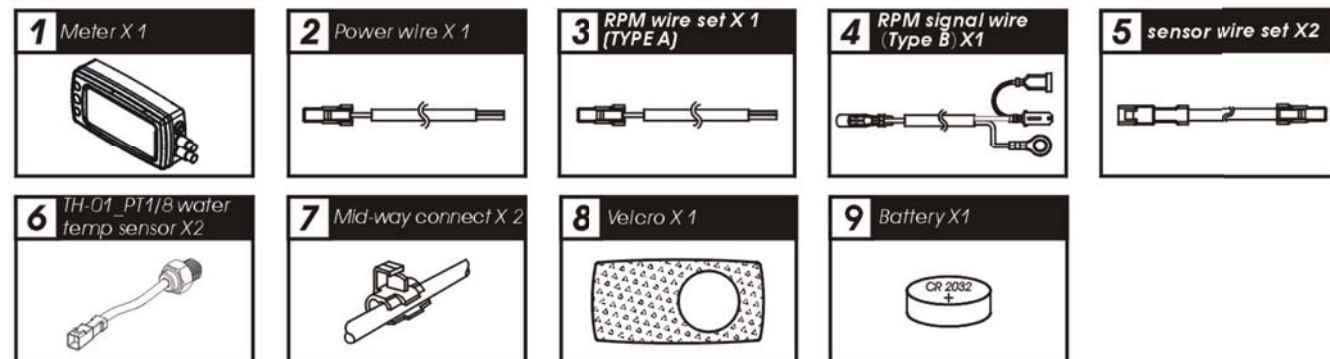
⚠ Some processes must be followed to avoid the affection caused by wrong installation.

⚠ WARNING! Some processes must be followed to avoid damages to yourself or the public.

⚠ CAUTION! Some processes must be followed to avoid the damage to the vehicle.

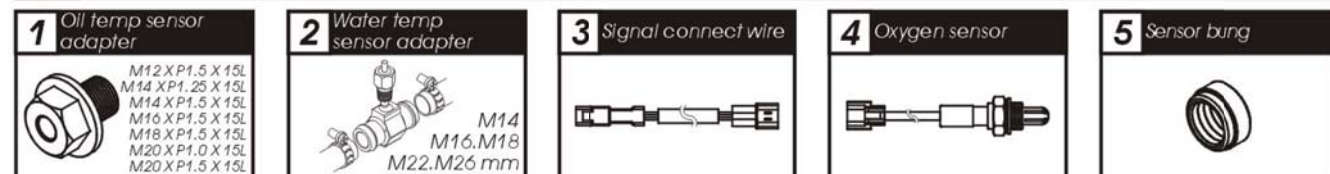


1-1 Accessory



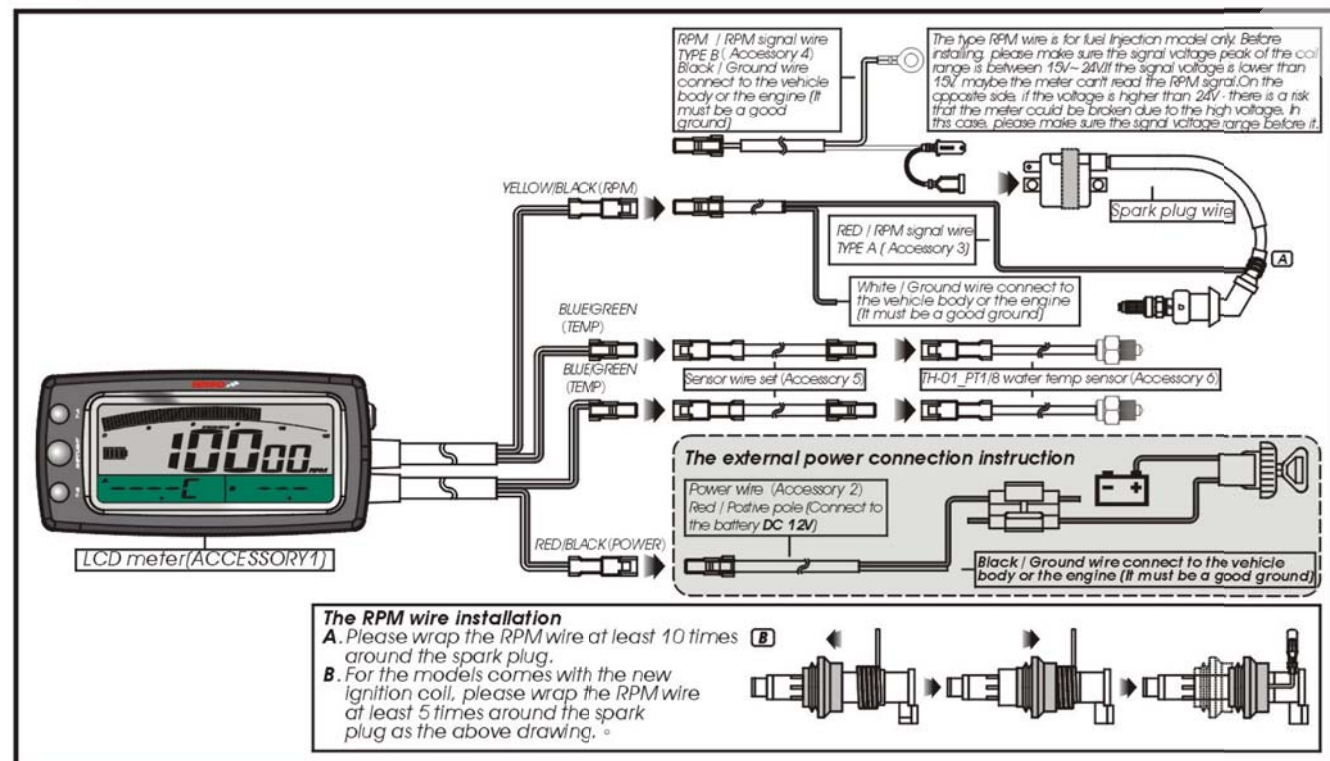
NOTE Please contact the local distributor if the items you open are not the same, with the above-listed one.

1-2 Option accessory

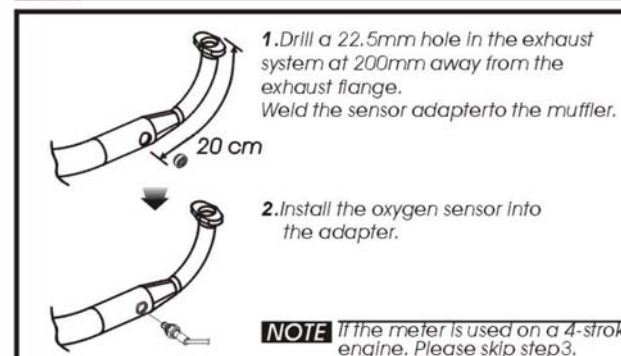


NOTE Some of the option accessories may not sell. For the details, please contact the local distributor.

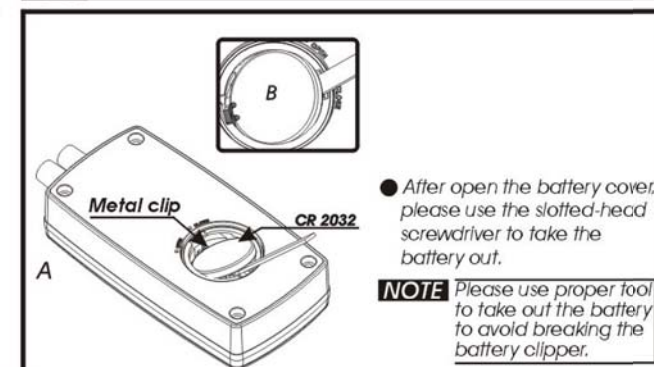
2-1 Wiring installation instructions



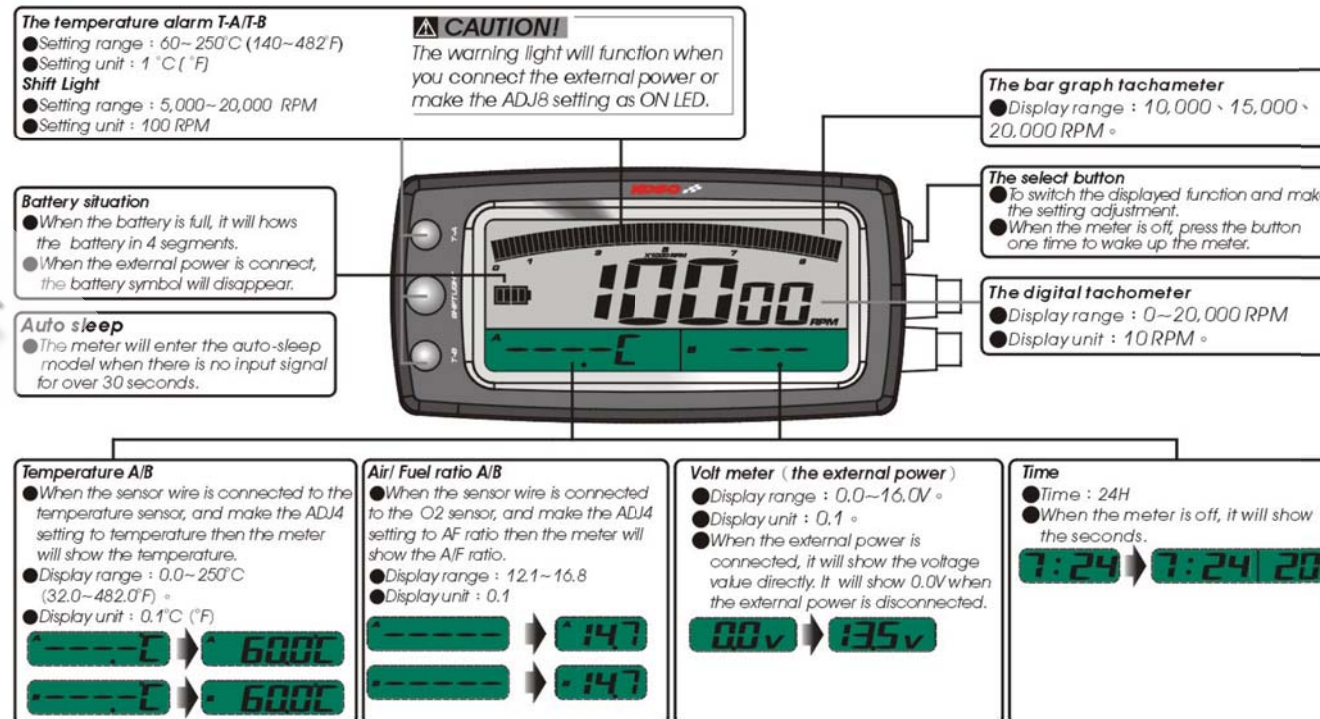
2-2 Oxygen sensor installation



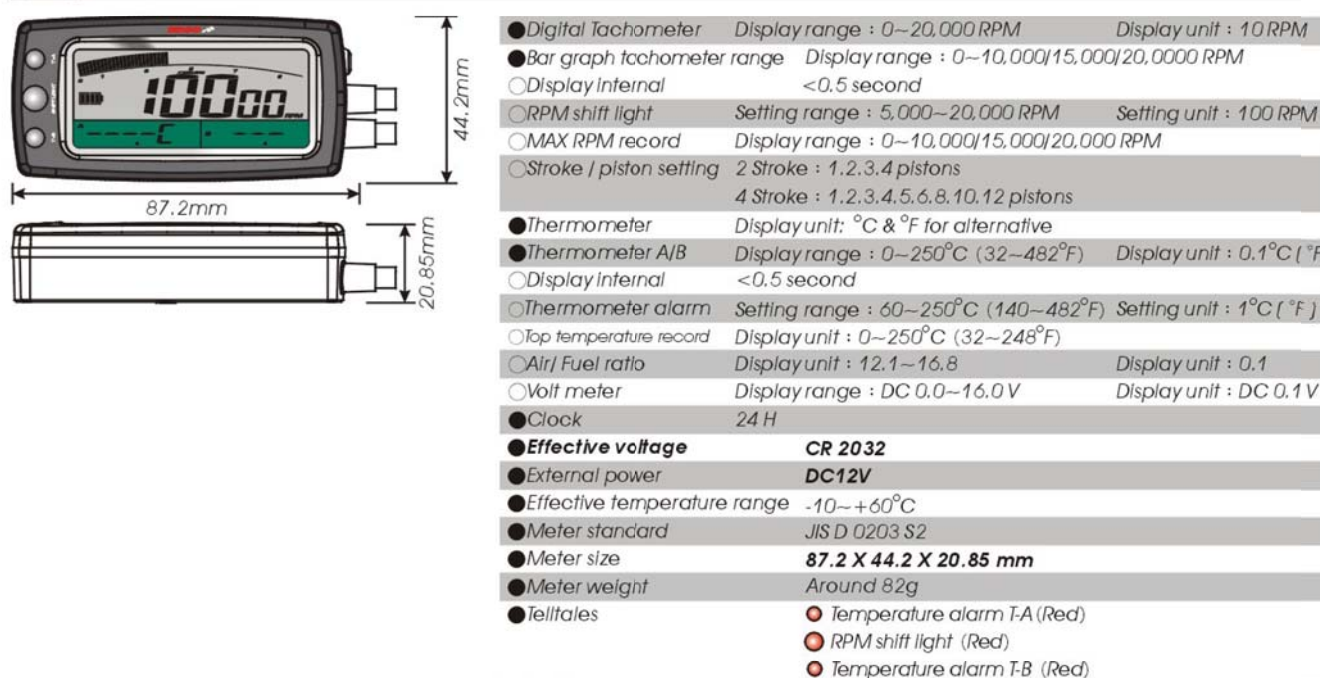
2-3 Battery change



3-1 Display instruction



3-2 Function instruction



NOTE Design and specification are subject to change without notice!

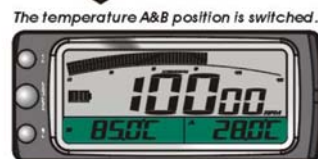
4-1 Function switch instruction

● You could choose the function combination you prefer by pressing the button. The function is displayed in order as the following drawing.

The main screen



Press the button one time



Press the button one time

Time & temperature A



Time & temperature B



Press the button one time

Max record screen



Press the button one time

Volt & Temperature B



Press the button one time

Volt & Temperature A

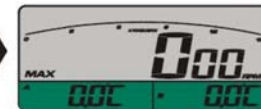


Press the button one time

4-2 Max record reset

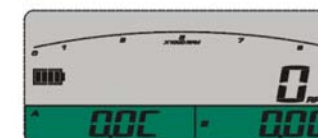


● In the max record screen, press down the button for 3 seconds to reset the record.



NOTE When you set the A/B setting as A/F ratio, it will not show the value in the Max record.

4-3 The Setting instruction



Cycle/piston setting



● In main screen, Press down the button for 3 seconds to enter the cycle and piston setting screen.

- EX: You want to change the setting from 2C:1P to 4C:8P.
- Press down the button for 3 seconds to enter the cycle setting screen.
- Press the button one time to change from 2C (Cycle) to 4C (Cycle).



CAUTION!

- Make sure the correct strokes and pistons before setting.
- Make sure the input is correct, or the RPM output will be incorrect.
- We define the engine with the ignition system ignites every 360 degree as 2-stroke and the engine with the ignition system ignites every 720 degree as 4-stroke.
- Some 4-stroke bikes with one single piston are igniting every 360 degree once, so the setting should be the same as the bike with 2-stroke and one piston engine.

- Press down the button for 3 seconds to enter the piston setting screen.
- Press the button to change the setting from 1P to 8P.



NOTE 2 Cycle: 1, 2, 3, 4 pistons / 4 Cycle: 1, 2, 3, 4, 5, 6, 8, 10, 12 pistons

Bar graph tachometer range



- After setting, press down the button for 3 seconds to return the ADJ1 screen.
- Press the button one time to enter the ADJ2 the Bar graph tachometer range setting.

- EX: You want to set Bar graph tachometer to 20,000 RPM.
- Press down the button for 3 seconds to enter the Bar graph tachometer range setting screen.
- Press the button to change the setting from 10000 RPM to 20000 RPM.



NOTE The Bar graph tachometer range : 10,000, 15,000, 20,000RPM

- After setting, press down the button for 3 seconds to return the ADJ2 screen.

- Press the button one time to enter the ADJ3 the shift light setting.

- EX: You want the shift light to light on at 15000 RPM.
- Press down the button for 3 seconds to enter the shift light setting screen.
- Press down the button for 3 seconds to move to the digital you want to set.
- Press the button to change the setting from 5000 RPM to 15000 RPM.



NOTE Display range : 500,0~20,000 (RPM) Display unit : 100 RPM

- After setting, Press down the button for 3 seconds to return the ADJ3 screen.

- Press the button one time to enter the ADJ4 the A/B sensor setting.

A/B sensor setting



- EX: You want to use the A/F ratio function and connect the lambda sensor to the sensor A.
- Press down the button for 3 seconds to enter the setting.
- Press the button one time to switch the setting from Temp to AFR.



- EX: You want to use the A/F ratio function and connect the lambda sensor to the sensor B
- Press down the button for 3 seconds to enter the setting.
- Press the button one time to switch the setting from Temp to AFR.



- After setting, Press down the button for 3 seconds to return the ADJ4 screen.

The temperature unit setting



- Press the button one time to enter the ADJ5 temperature unit setting.
- (When both of the sensor A & B are set as AFR, it will skip the ADJ5 and jump to ADJ7 directly.)

- EX: Now the temperature unit is °C.
- Press down the button for 3 seconds to enter the temperature unit setting screen.
- Press the button one time to changed from °C to °F.



- After setting, Press down the button for 3 seconds to return the ADJ5 screen.

The temperature alarm setting



- EX: You want to set the temperature alarm A at 105 °C.
- Press down the button for 3 seconds to enter the temperature alarm A setting screen.
- (When the sensor A is set as AFR, it will jump to temperature B alarm setting directly.)
- Press down the button for 3 seconds to move to the digital you want to set.
- Press the button to change the setting from 100 °C to 105 °C.



- Press down the button for 3 seconds to enter the temperature alarm B setting screen.

- (When the sensor B is set as AFR, it will jump to ADJ7 clock setting directly.)

- Press down the button for 3 seconds to move to the digital you want to set.

- Press the button to change the setting from 200 °C to 205 °C



NOTE Display range : 60~250 °C (140~482 °F) Display range: 1 °C (°F)

- After setting, Press down the button for 3 seconds to return the ADJ6 screen.

The clock setting



- Press the button one time to enter the ADJ7 the clock setting.

- EX: To change the setting to 14 : 05
- Press down the button for 3 seconds to enter the clock setting screen.
- Press down the button for 3 seconds to move to the digital you want to set.
- Press the button to change the setting from 00 : 00 to 14 : 05



- After setting, Press down the button for 3 seconds to return the ADJ7 screen.

Warning light condition setting



- Press the button one time to enter the ADJ8 the warning light condition setting

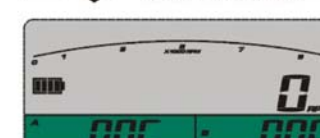
- EX: You want to change the current warning light condition setting to "On LED."
- Press down the button for 3 seconds to enter the warning light condition setting screen.
- Press the button one time to change the current warning light condition setting from "Auto LED" to "On LED."



CAUTION! AUTO LED : The warning light will function only when the external power is connected.
ON LED : The warning light will function all the time.

- After setting, Press down the button for 3 seconds to return the ADJ8 screen.

The main screen



- Press the button one time to return to the main screen.

- The main screen

5 Trouble shooting

The following situation do not indicate malfunction of the meter. Please check the following before taking it in for repair.

Trouble	Check item	Trouble	Check item
The back light doesn't work	● Please check the voltage of your battery, and make sure the voltage is over DC 12V	Tachometer does not appear or appear incorrectly.	● Please check the RPM sensor wiring is connected correctly.
The meter shows wrong information	● Maybe the problem is caused by the insufficient power → Please change the inner battery. (CR2032.)	Temp does not appear or appear incorrectly	● Please check the spark plug is R type or not. If not, please replace the spark plug with the R type spark plug.
	● Maybe the problem is caused by wrong battery Installation → Please check is the battery direction is correct.	The clock is incorrect	● Please check your setting. → Please refer to the manual 4-3.
			● Please check the sensor. → Does the wiring break or falling off.
			● Mabe the problem is caused by the Insufficient power → Please change the inner battery. (CR2032)

※If still can't solve the problems according to the steps above, please contact with distributors or us.